



# Premium Quality German Radiators



Electric Combination Radiator Systems



# Quality solutions for the ultimate heating experience

The LHZ Combination Electric Radiators have been designed using the latest technology to create an elegant solution for all hard to heat situations. They can be installed in almost any location due to the flexibility of the product.

The range has been developed to provide an adaptable solution for electric heating in Domestic properties, Conservatories, Holiday homes, Offices and any other central heating situation.

Our unique patented 'Magmatic' heating tablets provide the source for the radiator. Whilst the radiator is classed as a 100% efficient Direct Acting appliance, the heating tablets provide partial storage to prolong your heating comfort and to reduce running costs. The radiator has a robust body which incorporates a spot welded high fin surface area to ensure that there are no expansion or contraction noises during the heating cycle. The high fin design boasts 6 times the normal radiator surface area to provide a balance of Convection and Radiant heat for your added comfort.



The radiators can be simply plugged in to a standard socket or hard wired to an existing spur connection. The range has the flexibility of being wall mounted or free standing on castors or feet.

For added versatility we can supply conservatory radiators which are also ideal for use below windows with low sills.

All LHZ wall mounted radiators are supplied with electronic 24/7 programmable thermostats, compliant with LOT20 ERP regulations. Different manual thermostats are available when used on mobile radiators with stands or castors.

All LHZ radiators are manufactured in Germany to the highest safety and quality standards.

Each radiator is CE Marked and ENEC Marked and carries all the necessary European and other countries Approvals.

For countries within the EU, all LHZ wall mounted radiator are fully checked and tested prior to leaving the factory and are packed fully assembled complete with wall

hanging brackets and full Quality guaranteed Certification.

We hope that you find the superior products within this brochure of interest and we look forward to being of assistance to you in the near future.



LOT20 Compliant



# Setting the standard in electric heating



2kW/2.4kW



Also available with Eco-Receiver.  
Detailed description on page 22.

## Index

LHZ Heating Experience	2
Standard Size Electric Combination Radiators	4
Tall Radiators	8
Conservatory Radiators	10
Bathroom Radiators	12
Radiator Performance	14
Mobile Electric Radiators	16
LHZ Radiator Accessories	17
Wireless Control Radiators	19
DSM Smart Wi-Fi APPs	20
Solar PV-Ready Radiators	22
Technical Specification	23

# Standard size electric combination radiators



500w/600w

The LHZ Electric Combination Radiators have been accepted as a practical modern solution to outdated, inefficient electric storage heaters. In many countries they are cheaper to run than oil fired heating systems and are now comparable with natural gas.

Lucht LHZ application for all smart phones now available.



Their success is due largely to the following features and benefits:

- No boiler, plumbing or pipework required
- Ease of Installation
- Manual, radio frequency or digitally integrated thermostat
- Safe, clean and easy to operate
- Fully controllable by either manual or digitally controlled (TDI) thermostats.
- Slimline Radiators are 70mm deep
- Various outputs and sizes are available from 500w - 3kW
- No maintenance required 100% efficient
- Supplied with wall fixing brackets
- Castors, feet stands or radiator supports can be ordered as optional extras
- Radiators come fully assembled with appropriate plugs and 1.5m of cable
- All radiators are powder coated in a white high quality enameled finish

As our products are of such superior quality we are proud to offer a **15 year warranty** on our radiators and a **2 year warranty** on the electronics across our full range of LHZ Electric Combination Radiators.



2.8kW/3kW



# Close your eyes and dream in total comfort

No carbon monoxide risk and with a constant comfortable background temperature, you are assured of a warm and pleasant nights sleep.



1.5kW/1.8kW

# LHZ standard range of radiators

All of the LHZ "Standard" sized Combination Radiators are 63cm high and only 7cm deep" (please refer to sizing chart on page 23).

All Radiators are supplied with wall mounting brackets as standard. Radiator supports, feet or castors can be supplied as optional extras.



2.8kW/3kW

2kW/2.4kW

1.5kW/1.8kW

1kW/1.2kW

500w/600w

Tall reputation with high performance - whatever your space



1.8kW

8





Tall radiators are ideal for studies, living rooms as well as kitchens and bathrooms where space is at a premium. Towel rails can also be fitted.



1.2 kW



# Enjoy the outside inside with Conservatory radiators

1.6kW

To compliment your existing heating system LHZ have produced a selection of low profile electric radiators, all 340mm high. Ideal for use in conservatories, sunrooms and rooms with low window sills, all LHZ radiators are supplied with wall mounting brackets.

With the option of floor standing or castors you have the ability to place your radiator anywhere within your conservatory.

This practical range can be controlled by Manual, Radio Frequency or Integrated Digital Thermostats.



2kW

# Make a splash with bathroom radiators

All LHZ Bathroom Radiators, up to an output of 1.5kW, are **IPX4 rated** and therefore tested and approved for use in all bathroom situations.

From standard radiators to tall radiators with towel hanging rails and bathroom radiators with a choice of chrome or white towel rails.

Please consult a qualified electrician before installing an IPX rated radiator in any bathroom or wet room location.



1.2kW IPX4





500w/600w IPX4  
with towel rail



1kW/1.2kW IPX4



600w chrome  
towel rail



600w  
white  
towel  
rail



1.2kW  
IPX4  
with  
towel  
rail



## The LHZ engineering behind the quality

LHZ Combination Radiators heat the whole room evenly due to their high fin design.

This high fin design provides six times of surface area compared to other heaters

the same size, while helping warm air to circulate throughout the room by convection which in turn eliminates costly hot spots at ceiling height. As a result you will also experience enhanced heat at floor level and cosier feet.



Our unique combination radiators are designed to store the heat directly into the Magmatic Heat-Retention Tablets, without any loss of energy.

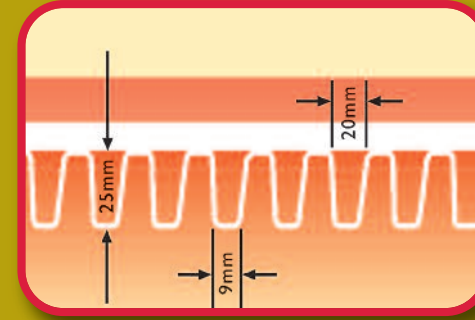
The metal ribs on the radiator form a six times greater surface area than a normal radiator. As a result of this, approximately 50% radiant heat as well as 50% convected heat is created, to give a much more constant temperature throughout the room, from floor to ceiling.

LHZ Radiators are unique due to the metal ribs being individually spot welded which prevents any noise during the heating up and cooling down cycle.

When the LHZ Radiators have achieved their required temperature the thermostat will cut the power to the Radiator. The Radiator will continue to provide heat, (that has been stored in the Magmatic tablets), for up to 45 minutes with no further use of electricity. The Radiators will use approximately 20–30 minutes of electricity per hour, depending upon on the building fabric and outside temperature.

The heating conductors are produced from high quality chrome-nickel steel (resistant to scaling up to 1100 °C) which are moulded into the Magmatic tablet, reducing the risk of corrosion.

The contacts inside the radiators are protected with heat shrinkable insulated sleeves to ensure optimum safety. Multiple thermocouples within each radiator provide overheat protection for additional safety.



← Optimum radiant heat created by outer High Fin Surface area



Inside - **Magmatic®** heat retention tablets



# Mobile Electric Radiators



The LHZ Mobile Combination Electric Radiators can be supplied with a Manual Electronic Thermostat Controller located on the side of the Radiator for complete Temperature Control. Each Radiator is supplied with either Radiator Feet or Castors which enables you to heat any Room within your Property.

We offer a selection of outputs from 500 watts to 3000 watts in Standard height models. The Conservatory Range has a choice of 4 models from 500 watts and 2000 watts which are only 340mm in height.

All Radiators are supplied with a 1.5metre Cable.

## Technical Specification

Stock Code	Output	Dimensions (mm)			Weight (kg)
		W	H	D	
D800.38.63	800watt	380	630	70	22
D1200.68.63	1200watt	680	630	70	36
D1500.98.63	1500watt	980	630	70	50
D1600.128.34	1600watt	1280	340	70	34.5
D2000.128.63	2000watt	1280	630	70	62
D2000.158.34	2000watt	1580	340	70	38
D2400.128.63	2400watt	1280	630	70	62



Castors



Feet stands



# Radiator Fixing accessories

The LHZ Radiator range is totally flexible and mobile for location in whatever space you need the heat. Installation kits for wall fastening are supplied as standard.

Radiators can also be mounted on feet stands or castors for ease of movement. Feet supports are also available if required.

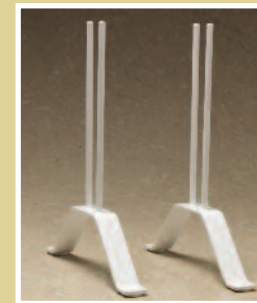
All LHZ radiators are available on request in any of the 900 colours from the RAL chart.



Installation kit for wall Fastening



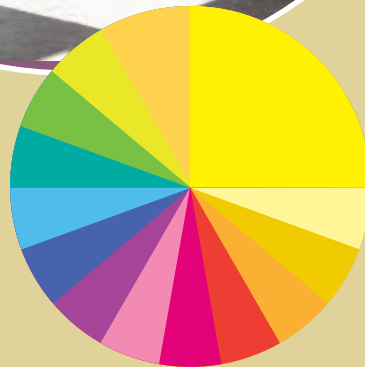
Radiator Feet supports



Feet stands



Castors



An infinite spectrum of colour coatings

# Integral Control options

## TDI 24 hour Digital Programmable Thermostat



### Programming Mode:

The radiator can be programmed 24 hours/7 days at required temperatures.

### Economy Temp:

The Economy setting default is 3.5 deg lower than the comfort setting. The Economy setting can be set up to 10°C lower than the comfort temperature.

### Timer/Boost Mode:

This boost facility can be used to over-ride the programming mode. Temperature can be set between 5°C and 30°C for 30 mins to 72 hours.

### Heating Demand Mode:

The ON icon displayed indicates that the radiator is in heating demand mode.

### Frost Protection:

Frost protection temperature can be set between 5°C and 15°C.

### Other features

- Keypad locking function
- Holiday Mode – the radiator can be set to "OFF" for the period of your holiday
- Backlight timeout setting – the timeout of the backlight can be set between 0-225 seconds

For full operating instructions refer our to website.

(Please note that TDI Models provide the luxury of Time & Temperature control which makes them ideal as Stand Alone Heaters)

## TEI1 (E4) Manual Electronic Thermostat



For mobile radiators available in EU Countries

### Thermostat features:

- On/Off mode
- Green light on shows power is going into the Thermostat
- Green AND Red lights on, means that power is going both into the Thermostat AND into the Radiator Elements/ Magmatic Tablets

# Radio Frequency Control options



TRF wireless receiver

## T Pod - eco thermostat

- 24/7 controllable digital radio frequency thermostat
- Can control up to 9 Radiators in one zone at the same time
- Can be used in conjunction with Eco Control See page 21

# LHZ Wireless Control Radiators

The LHZ Combination Radiators Wireless Control option uses an RF Wireless thermostat that provides:

- Wireless Control
- 24/7 controllable digital radio Timer and Thermostat
- Can control up to 9 Radiators in one zone at the same time

The LHZ Wireless Control Radiator has a surface mounted T POD receiver on the side of the Radiator that works in conjunction with a separate T POD thermostat.

This T POD thermostat provides manual or 24/7 control over your radiator and also allows you to set Frost, Comfort and Economy setting temperatures.



*T POD controller must be purchased separately.*

2kW/2.4kW



LOT20 Compliant

# Demand Side Management Electric Heating

LHZ's unique **DSM** Electric Combination Radiators have **In-Built Wi-Fi** capability that can be activated using the optional **DSM** Gateway. They are the first German Electric Radiators of their type that can be controlled via a bespoke APP Control System. This easy to install system is suitable as a complete central heating system or stand-alone Radiators. They can be individually controlled using the Digital Controller located on the side of the Radiator or alternatively using the bespoke APP.

- Control your heating anytime and anywhere
- Fully controllable for both Time and Temperature
- Energy saving APP Control
- Limit electricity consumption to avoid exceeding maximum power available
- Monitor your electricity consumption
- Open window sensor saving energy and money
- Use individually or as a fully integrated central heating system
- Portable (on castors or feet) or fixed (wall-mounted)
- 500w-2400w output



- Patented heating tablets continue to radiate heat for up to 45 minutes offering increased comfort
- High fin design provides up to six times the surface area of a conventional radiator
- Maintenance free and 100% Energy Efficient

## Home Page Menu

Displays the heating status, temperature and operational functions of your system. You can select how you want to program your Heaters 24/7 however you have the facility to make changes to your heating requirements anytime, anywhere.



## Power & Temperature Statistics Menu

The Smart system enables you to monitor the consumed power and temperatures at any time.

## Consumption Limiter Menu

All homes have a maximum electrical power capacity. In order to stay within the limits of the capacity the Smart system has an inbuilt electricity consumption monitor / limiter. Our Smart Kit has an optional 100amp Power Meter Clamp.



## Individual Heater Devices Menu

The Smart Wi-Fi system allows you to add, delete and prioritise Heaters at any time to provide you with full system control.



15 Year Guarantee

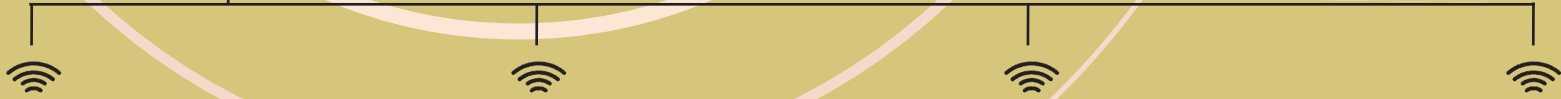


Simply connect to the Internet using a Smartphone, Tablet or PC and you will be able to open your LHZ Smart APP to control your heating 24/7. Our APP is compatible with both Apple and Android products.

# DSM Smart Wi-Fi APPs

To convert your Smart Wi-Fi ready Radiator to an intelligent appliance that can be controlled anywhere, anytime you can purchase the LHZ DSM Smart Wi-Fi kit which includes:

- Smart Gateway
- Power Meter Clamp (optional)



Living Room



Study



Conservatory



Bedroom

# LHZ Solar PV Ready Electric Radiators

Your Solar PV system is designed to generate Electricity and Income for your property however you could lose up to 70% of your available generated power if you're not using your appliances with the power generated, as the solar energy will be exported back to the grid.

LHZ offer a practical solution with our Solar PV Ready Electric Radiators which can be used as a secondary heat source when using the energy generated by your Solar PV system combined with our Solar Controller unit. This unique range boasts the same benefits offered by our Standard Electric Combination Radiators, and are also popular as a secondary pre-heat source for those hard to heat and commonly used living areas.

- Suitable for new and retrofit Installations
- Heating powered with energy generated by your Solar PV system
- Each Radiator can be individually controlled by a Manual Thermostat
- Send your generated Solar PV Energy to rooms that require the most Heat
- No CO<sub>2</sub> Emissions
- Sustainable for the Future
- Warranty – Main Body 15 Years/Electronics 2 Years



## Technical Specification

Stock Code	Description	Dimensions (mm)			Weight (kg)
		W	H	D	
DPV1200.68.63	1200watt EHC PV READY RADIATOR	680	630	70	36
DPV1200.38.124	1200watt EHC TALL PV READY RADIATOR	380	1240	70	35
DPV1800.98.63	1800watt EHC PV READY RADIATOR	980	630	70	50
DPV1800.55.124	1800watt EHC TALL PV READY RADIATOR	550	1240	70	58

# Technical Specification

Model No. Manual	Description	Colour	Rating BTU's	DIMENSIONS			Weight (kg)
				Width (mm)	Height (mm)	Depth (mm)	
<b>STANDARD RADIATORS</b>							
D500.38.63	500watt ELECTRIC RADIATOR	White	1706	380	630	70	22
D600.38.63	600watt ELECTRIC RADIATOR	White	2730	380	630	70	22
D1000.68.63	1000watt ELECTRIC RADIATOR	White	3412	680	630	70	36
D1200.68.63	1200watt ELECTRIC RADIATOR	White	4097	680	630	70	36
D1500.98.63	1500watt ELECTRIC RADIATOR	White	5118	980	630	70	50
D1800.98.63	1800watt ELECTRIC RADIATOR	White	6146	980	630	70	50
D2000.128.63	2000watt ELECTRIC RADIATOR	White	6824	1280	630	70	62
D2400.128.63	2400watt ELECTRIC RADIATOR	White	8189	1280	630	70	62
D2800.158.63	2800watt ELECTRIC RADIATOR	White	9560	1580	630	70	62
<b>CONSERVATORY RADIATORS</b>							
D500.68.34	500watt ELECTRIC CONSERVATORY RAD	White	1706	680	340	70	21
D1000.85.34	1000watt ELECTRIC CONSERVATORY RAD	White	3412	850	340	70	24,5
D1600.128.34	1600watt ELECTRIC CONSERVATORY RAD	White	5459	1280	340	70	34,5
D2000.158.34	2000watt ELECTRIC CONSERVATORY RAD	White	6824	1580	340	70	38
<b>TALL RADIATORS</b>							
D1200.38.124	1200watt ELECTRIC RADIATOR	White	4097	380	1240	70	35
D1800.55.124	1800watt ELECTRIC RADIATOR	White	6146	550	1240	70	58
D2200.68.124	2200watt ELECTRIC RADIATOR	White	7507	680	1240	70	60
<b>BATHROOM RADIATORS (IPX4)</b>							
D600.38.63IPX4	600watt ELECTRIC BATHROOM RADIATOR	White	2047	380	630	70	22
D1000.68.63IPX4	1000watt ELECTRIC BATHROOM RADIATOR	White	3412	680	630	70	36
<b>CONTROLS &amp; ACCESSORIES</b>							
CAST/I D FEET/I D RADSUPP S/PACK/I D TPod TBasic	RADIATOR CASTORS RADIATOR FEET RADIATOR FEET SUPPORTS SINGLE CHANNEL HEATPACK 7 DAY DIGITAL PROGRAMMABLE THERMOSTAT R/F THERMOSTAT						

The above Model Nos. are for LHZ Standard Radiators with TEI I control.

The following details should be prefixed to these codes when ordering a different type of control:

TDI DSM RF  
See below for examples.

The following is a typical example when ordering an LHZ Radiator. D1000.68.63 (This radiator has a manual standard TEI I control). D1000.68.63TDI (This radiator has an integral TDI control for time & temperature). D1000.68.63DSM - integral 24/7 programmable thermostat. (This radiator has an integral digital control feature). D1000.68.63RF (This radiator has an inbuilt radio frequency receiver).

# LHZ electric combination Radiators

Worldwide distribution network

**Head Office and Production in Germany**

Albania  
Austria  
Australia  
Belgium  
Bulgaria  
Canada  
China  
Cyprus  
Czech Republic  
France  
Germany  
Greece  
Hungary  
Iran  
Ireland  
Israel  
Italy  
Netherlands  
New Zealand  
Pakistan  
Poland  
Romania  
Russia  
Slovakia  
Slovenia  
South Africa  
Spain  
Taiwan  
Turkey  
Ukraine  
United Kingdom



Electric Combination Radiator Systems

LUCHT LHZ  
Elektroheizung GmbH & Co. KG  
Reinhard-Schmidt-Strasse 1  
09217 Burgstädt  
Tel.: 0049 3724 66869 25  
Fax: 0049 3724 66869 20  
[www.electric-heating.eu](http://www.electric-heating.eu)



- Europe -wide applicable
- Safety tested
- Production controlled

LUCHT LHZ Elektroheizung GmbH & Co. KG delivers premier heating products across the world. Our range of LHZ Combination Radiators are produced in Germany and comply with the appropriate standards of the European Union and Certificate Institutes.



Disclaimer – All figures quoted are correct at the time of printing and may be subject to change